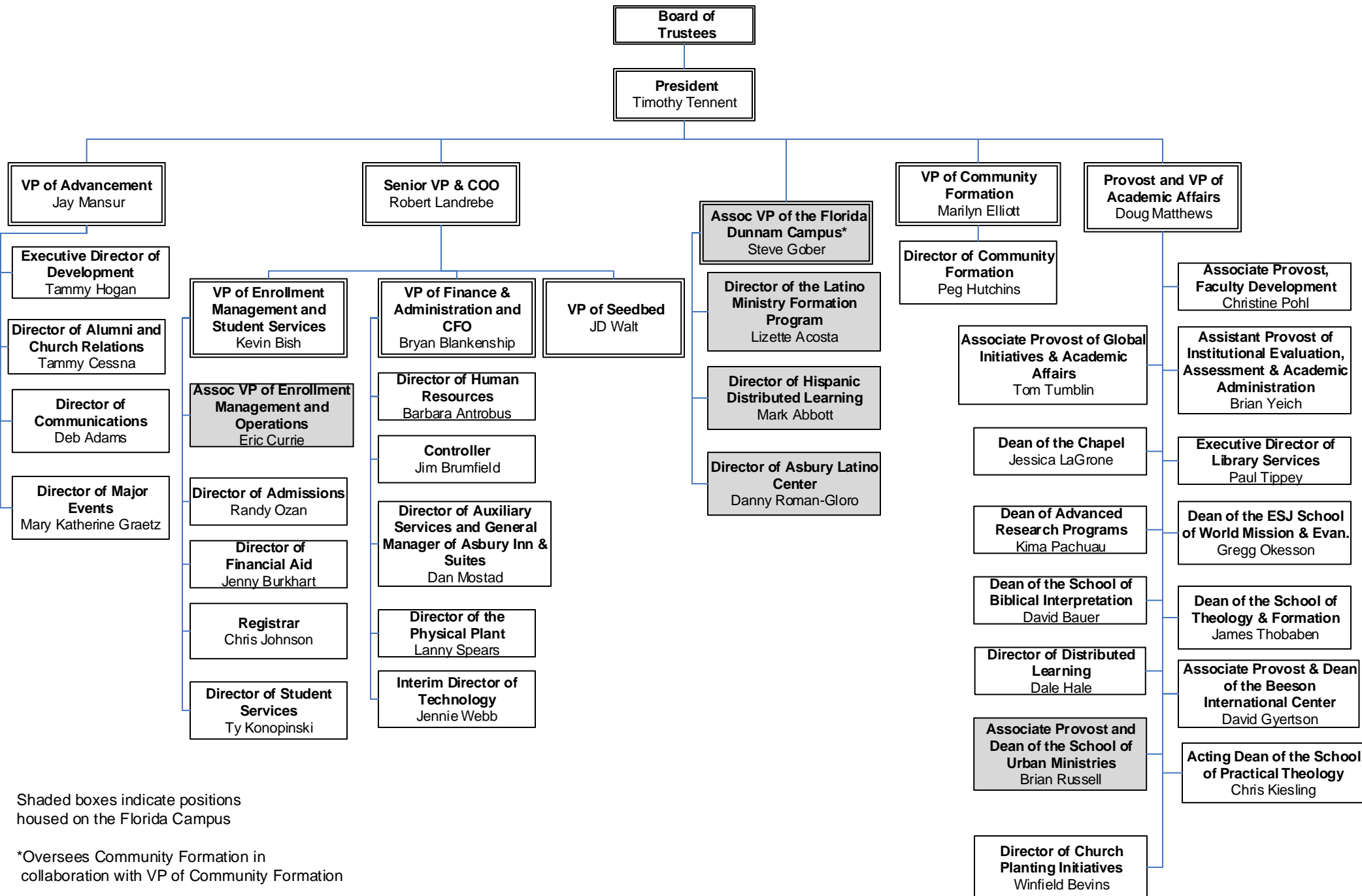


# Asbury Theological Seminary

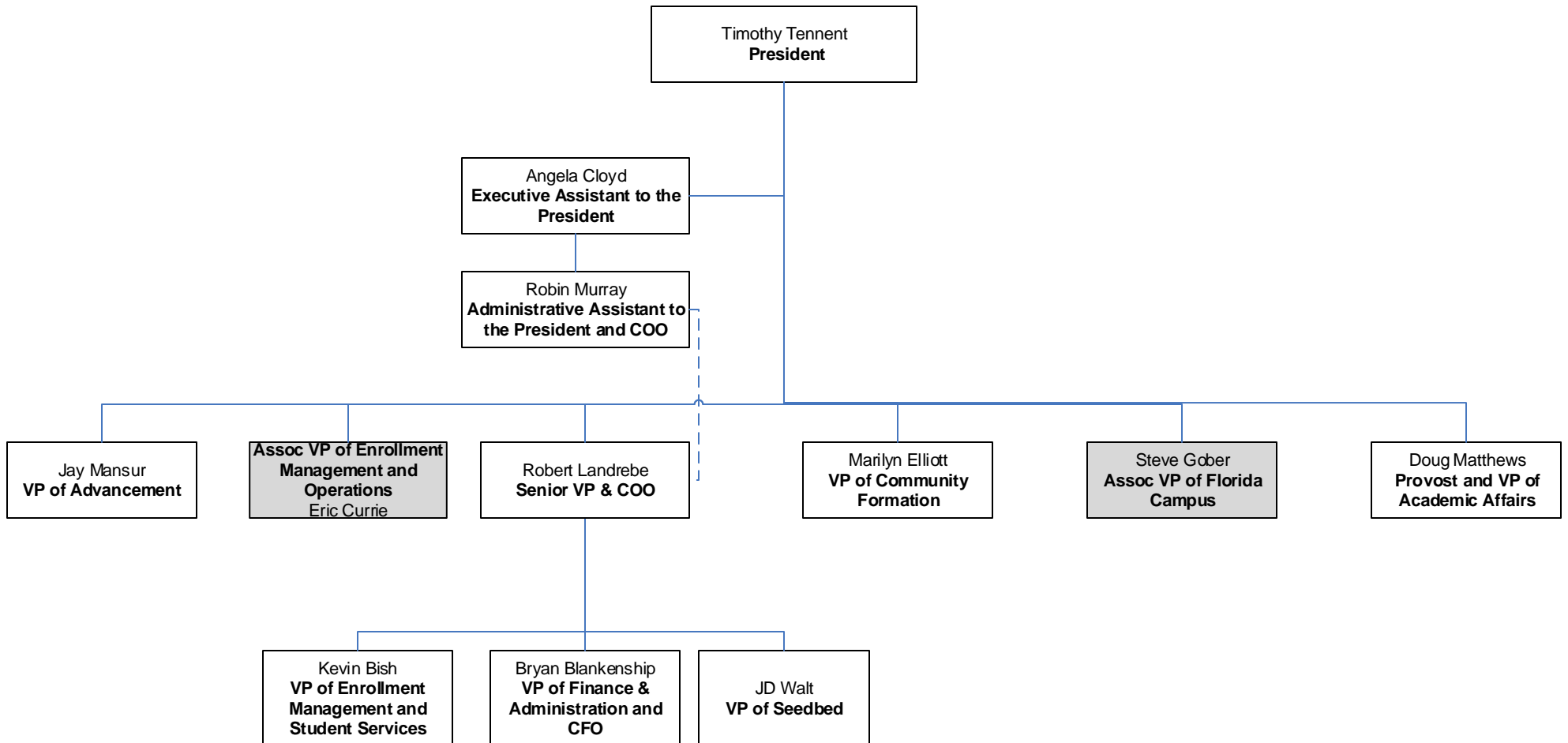
## Organizational Charts

(as of October 3, 2017)

# ATS Organization Chart

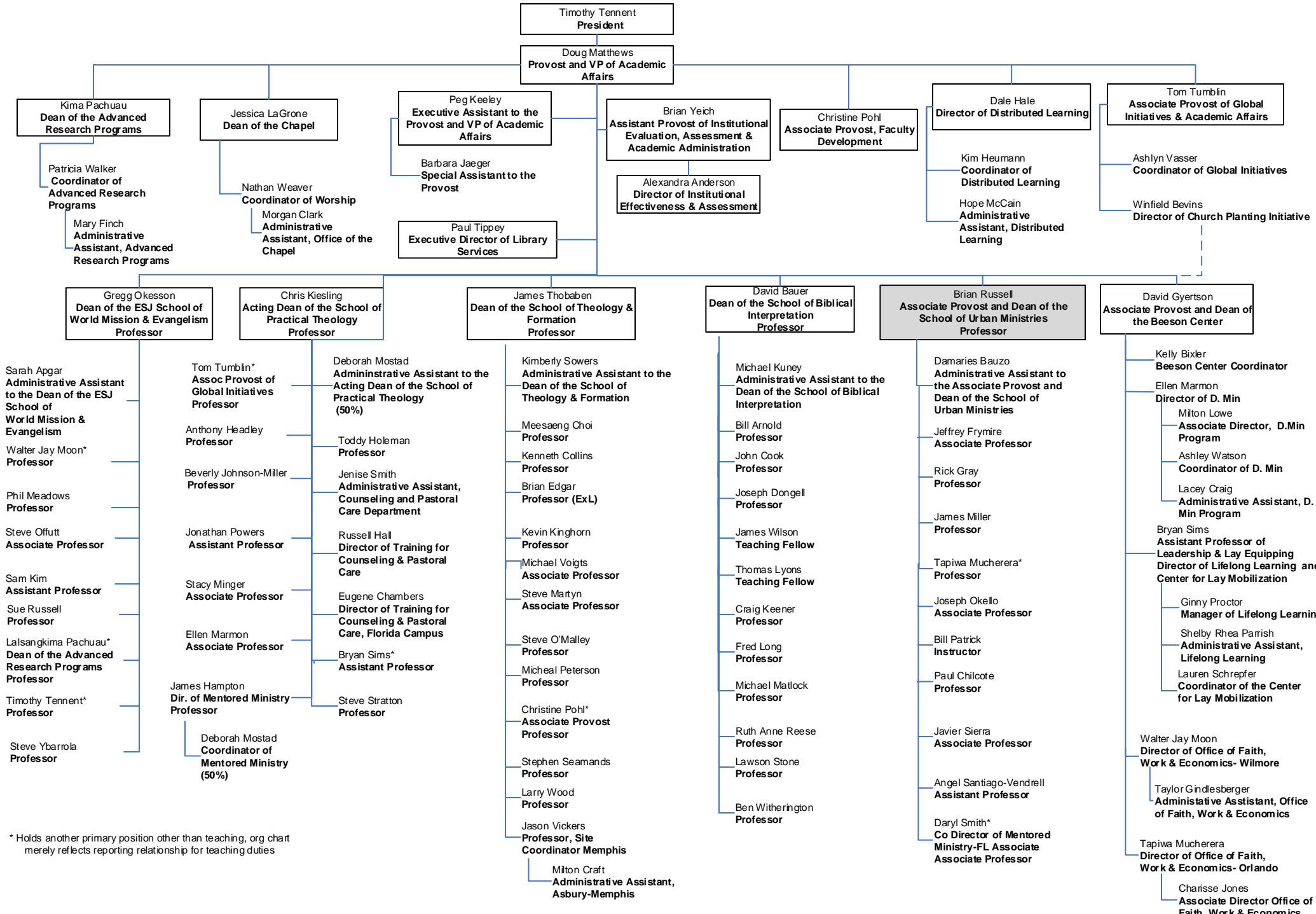


# Office of the President



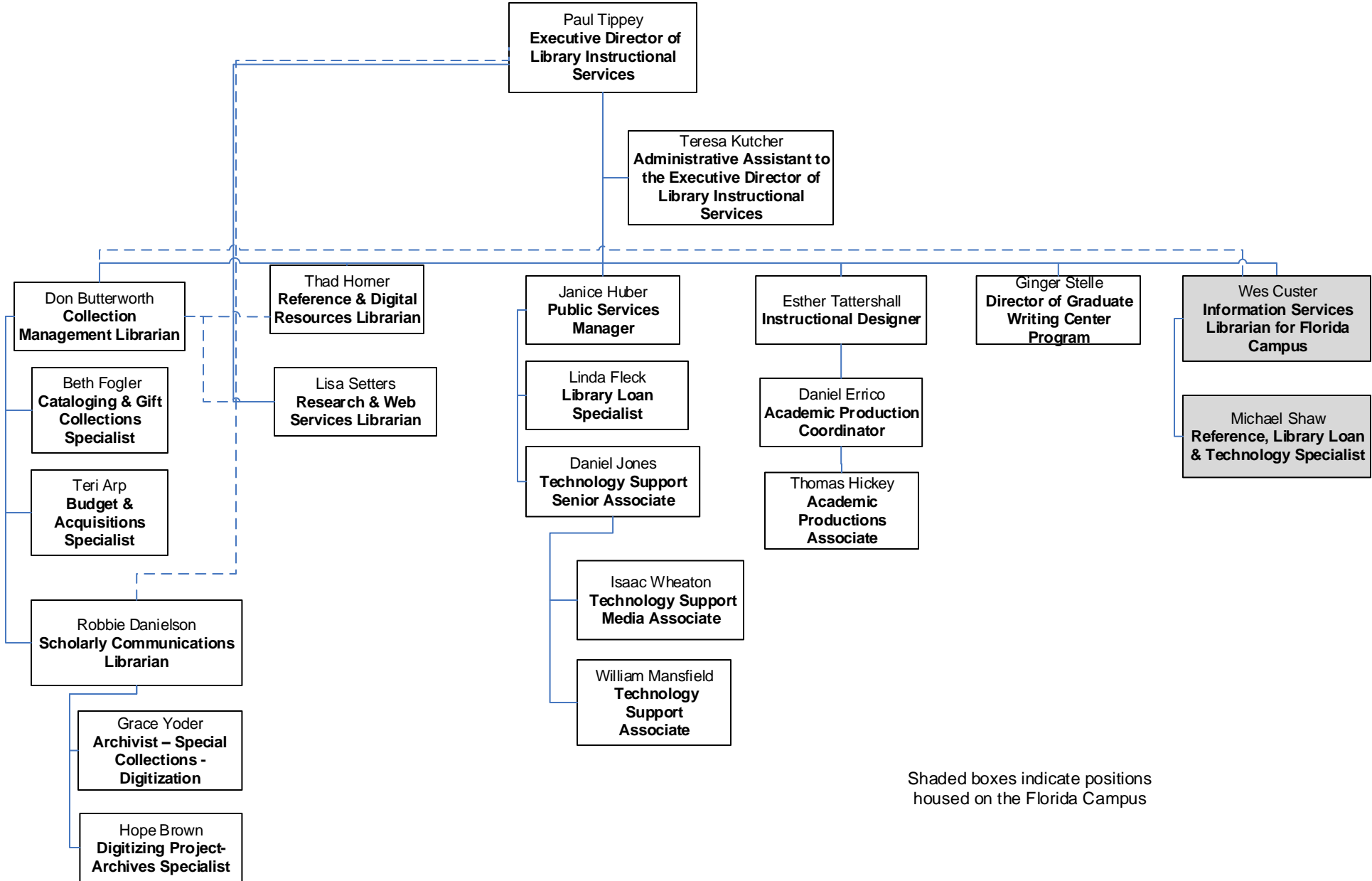
Shaded boxes indicate positions  
housed on the Florida Campus

# Academic Affairs



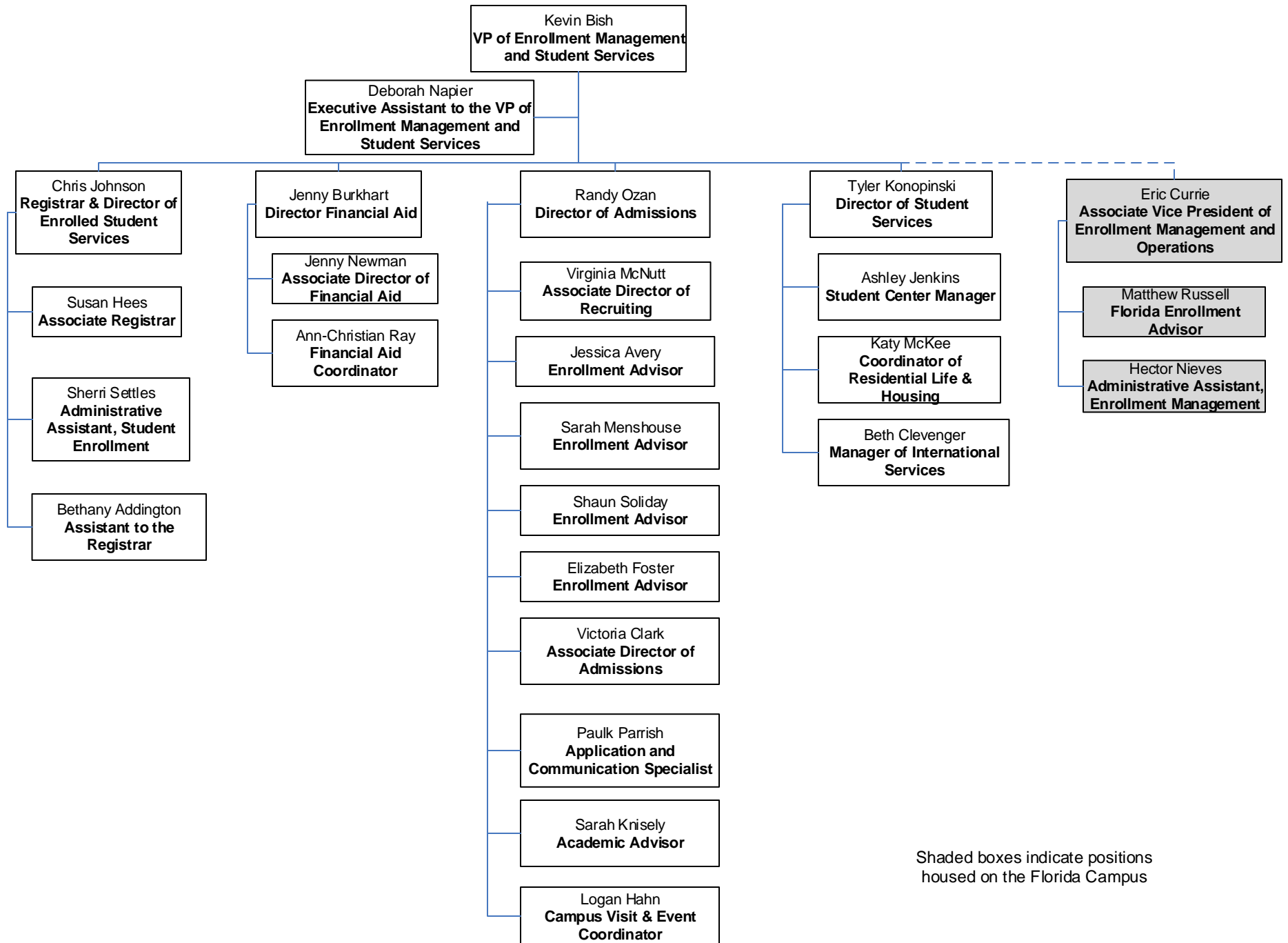
\* Holds another primary position other than teaching, org chart merely reflects reporting relationship for teaching duties

# Library Instructional Services

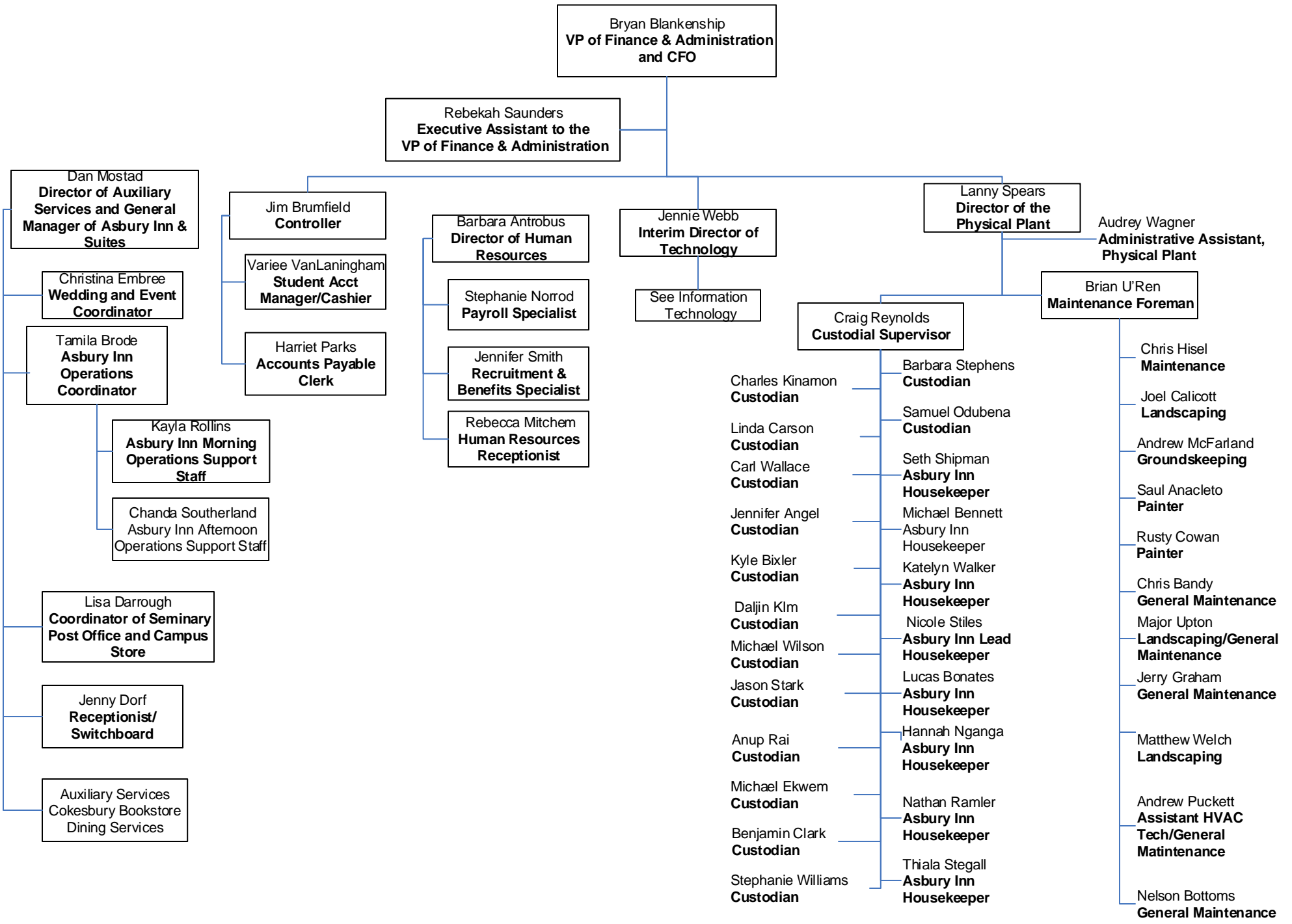


Shaded boxes indicate positions housed on the Florida Campus

# Enrollment Management and Student Services



# Finance & Administration



# Information Technology

Jennie Webb  
**Interim Director of  
Technology**

Carolee Flewelling  
**IT Administrative  
Associate**

Robert Thimons  
**Network and Systems  
Engineer**

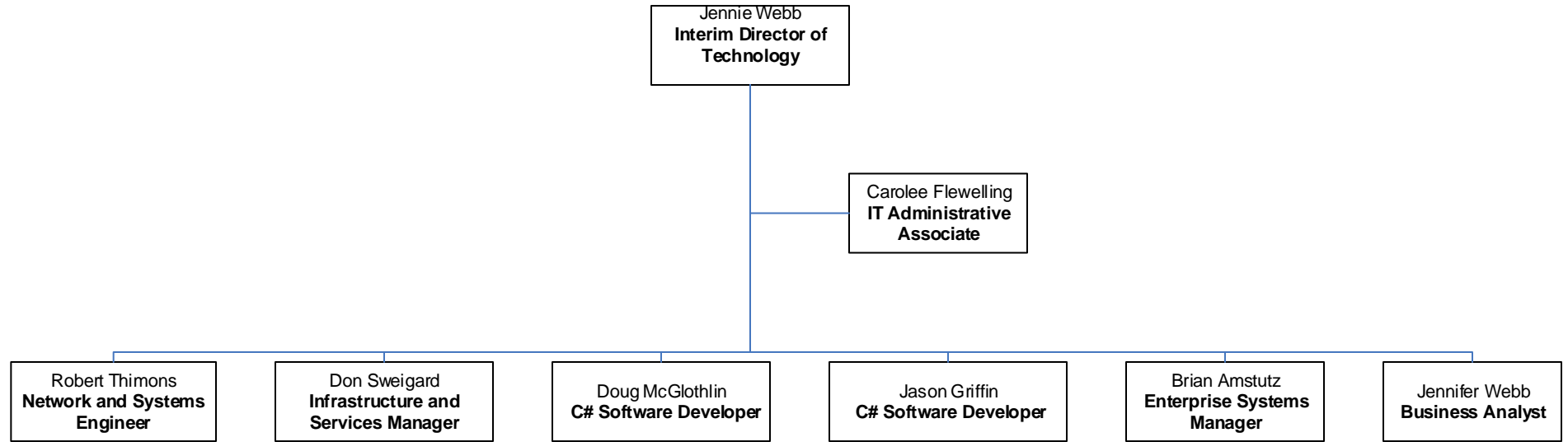
Don Sweigard  
**Infrastructure and  
Services Manager**

Doug McGlothlin  
**C# Software Developer**

Jason Griffin  
**C# Software Developer**

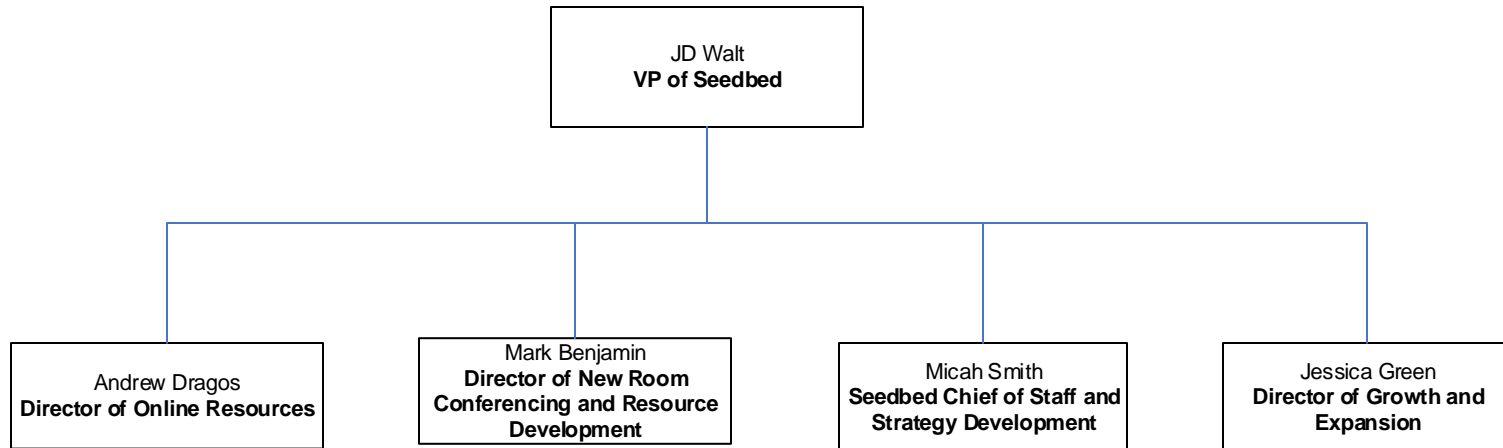
Brian Amstutz  
**Enterprise Systems  
Manager**

Jennifer Webb  
**Business Analyst**

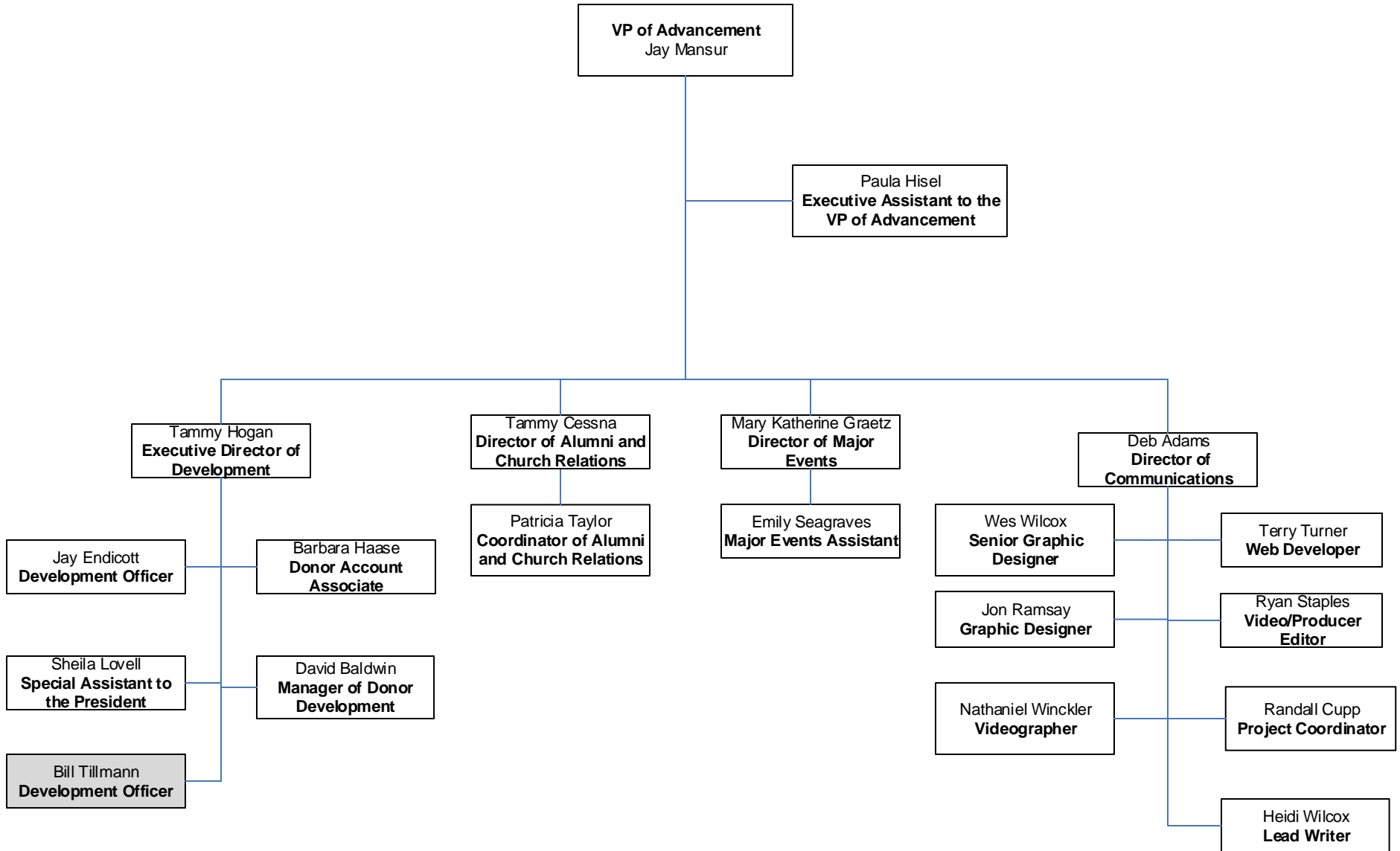




# Seedbed

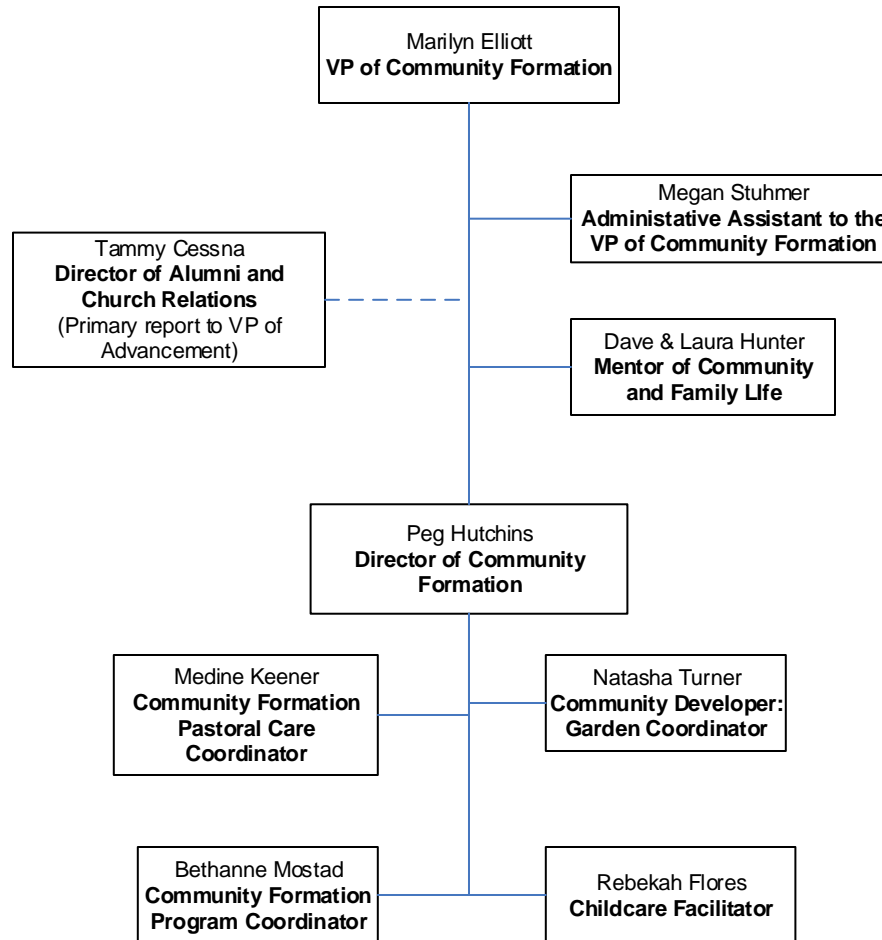


# Advancement



Shaded boxes indicate positions housed on the Florida Campus

# Community Formation



# Florida - Dunnam Campus

